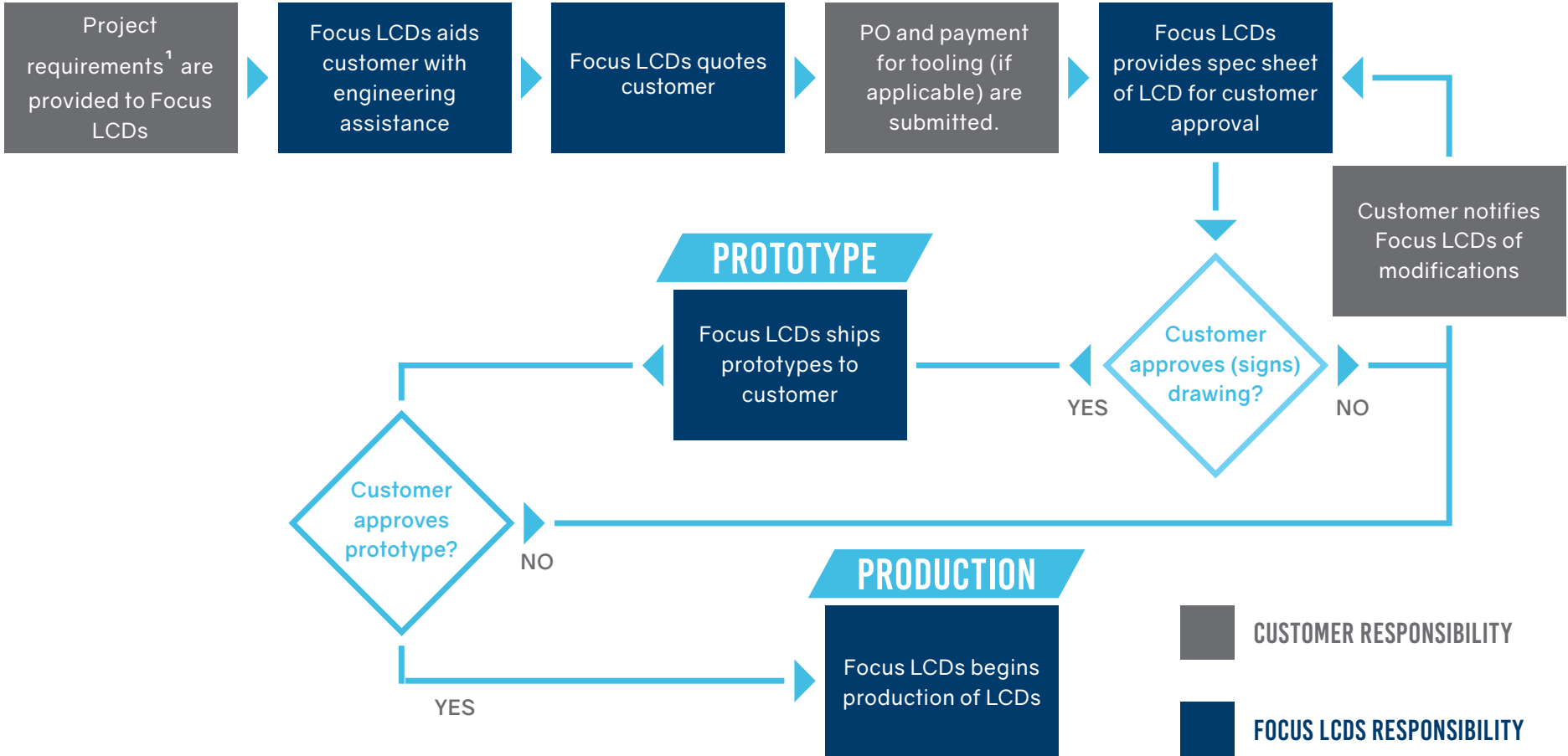




# PROCESS FOR DESIGNING YOUR CUSTOM LCD

## PROJECT CONCEPT



1. CAD drawings, sketches on cocktail napkins and verbal explanations are all acceptable.
2. NRE stands for Non-Recurring Engineering. This is a one-time fee.

3. Tooling/NRE costs are paid in advance of sample design and build.