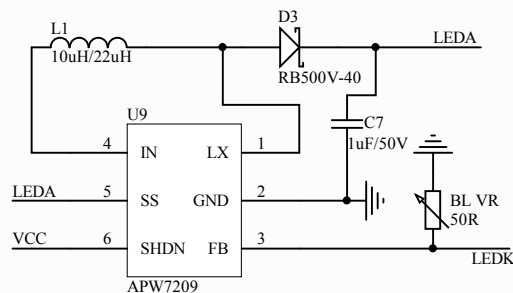


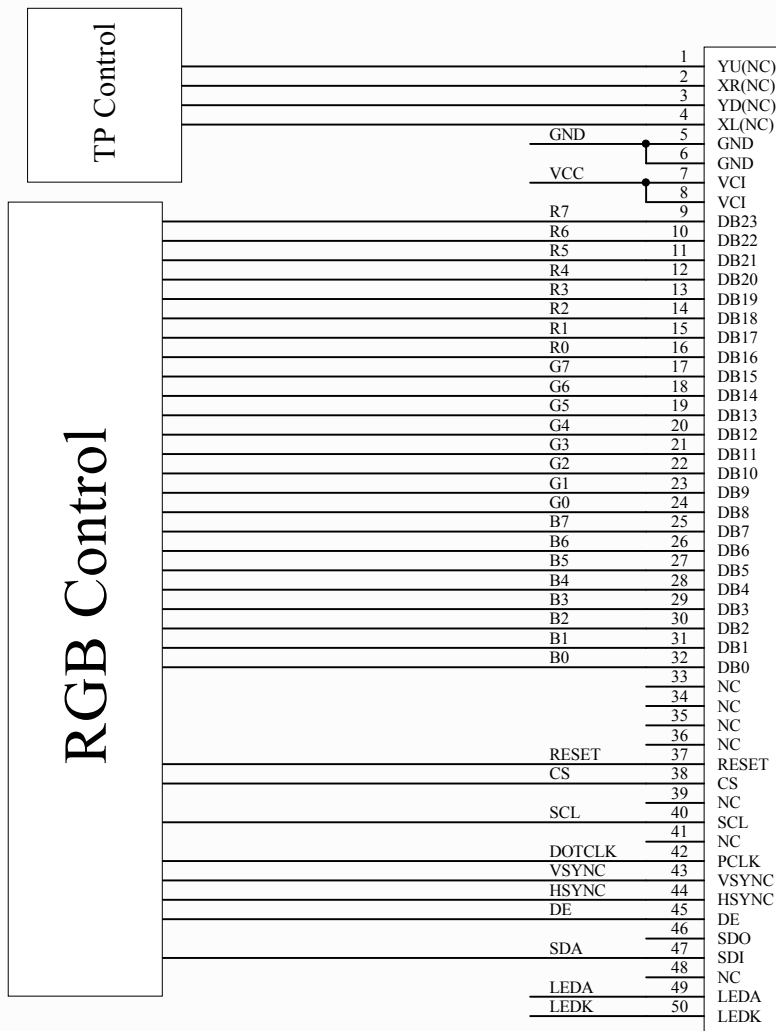
E40RB-FW480-N

24BIT RGB Interface



NOTE:

- 1.SDO PIN if not used place OPEN
- 2.Interface: 3SPI+24BIT RGB
- 3.VCC=3.3V



<p style="text-align: center; font-weight: bold;">PROPRIETARY AND CONFIDENTIAL</p> <p style="font-size: 8px;">THE INFORMATION CONTAINED IN THIS DRAWING IS THE SOLE PROPERTY OF FOCUS DISPLAY SOLUTIONS, INC. ANY REPRODUCTION IN PART OR AS A WHOLE WITHOUT THE WRITTEN PERMISSIONS OF FOCUS DISPLAY SOLUTIONS, INC. IS PROHIBITED</p>	Model Name: E40RB-FW480-N		FOCUS LCDs <small>LCDs MADE SIMPLE®</small>	
	General Tol: ± 0.2		Drawing No.:	
	Approvals	Date	Scale:	
	DWN:		Size:	Unit: mm
	CHK:			Page: 1/1