



FOCUS LCDs
LCDs MADE SIMPLE®

Ph. 480-503-4295 | NOPP@FocusLCDs.com

TFT | OLED | CHARACTER | GRAPHIC | UWVD | SEGMENT | CUSTOM

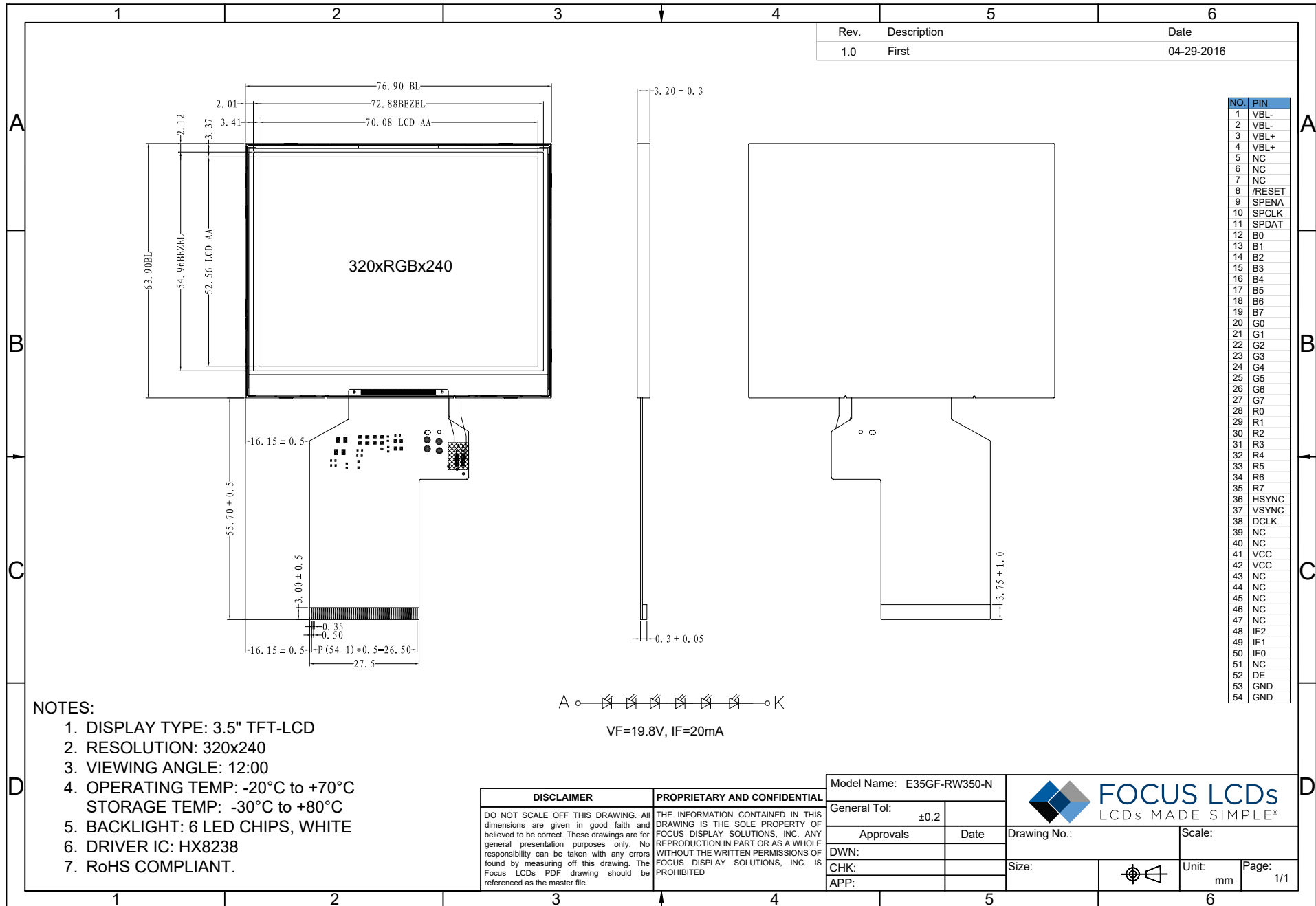
TFT Display Module

Part Number

E35GF-RW350-N

Overview:

- 3.5-Inch TFT (76.9x63.9mm)
- 320x240 Pixels
- 16/18/24-Bit RGB Interface
- Operating Temp: -20°C to +70°C
- 12:00 Viewing Angle
- Transmissive
- No Touch Panel
- 350 Nits
- TFT IC: HX8238
- RoHS Compliant

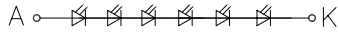


Rev.	Description	Date
1.0	First	04-29-2016

NO.	PIN
1	VBL-
2	VBL-
3	VBL+
4	VBL+
5	NC
6	NC
7	NC
8	/RESET
9	SPENA
10	SPCLK
11	SPDAT
12	B0
13	B1
14	B2
15	B3
16	B4
17	B5
18	B6
19	B7
20	G0
21	G1
22	G2
23	G3
24	G4
25	G5
26	G6
27	G7
28	R0
29	R1
30	R2
31	R3
32	R4
33	R5
34	R6
35	R7
36	HSYNC
37	VSYNC
38	DCLK
39	NC
40	NC
41	VCC
42	VCC
43	NC
44	NC
45	NC
46	NC
47	NC
48	IF2
49	IF1
50	IF0
51	NC
52	DE
53	GND
54	GND

NOTES:

1. DISPLAY TYPE: 3.5" TFT-LCD
2. RESOLUTION: 320x240
3. VIEWING ANGLE: 12:00
4. OPERATING TEMP: -20°C to +70°C
STORAGE TEMP: -30°C to +80°C
5. BACKLIGHT: 6 LED CHIPS, WHITE
6. DRIVER IC: HX8238
7. RoHS COMPLIANT.



VF=19.8V, IF=20mA

DISCLAIMER	PROPRIETARY AND CONFIDENTIAL
DO NOT SCALE OFF THIS DRAWING. All dimensions are given in good faith and believed to be correct. These drawings are for general presentation purposes only. No responsibility can be taken with any errors found by measuring off this drawing. The Focus LCDs PDF drawing should be referenced as the master file.	THE INFORMATION CONTAINED IN THIS DRAWING IS THE SOLE PROPERTY OF FOCUS DISPLAY SOLUTIONS, INC. ANY REPRODUCTION IN PART OR AS A WHOLE WITHOUT THE WRITTEN PERMISSIONS OF FOCUS DISPLAY SOLUTIONS, INC. IS PROHIBITED

Model Name: E35GF-RW350-N	
General Tol:	±0.2
Approvals	Date
DWN:	
CHK:	
APP:	

FOCUS LCDs
LCDs MADE SIMPLE®

Drawing No.:	Scale:
Size:	Unit: mm
Page:	1/1